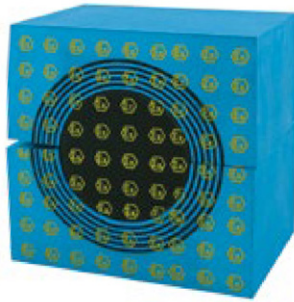
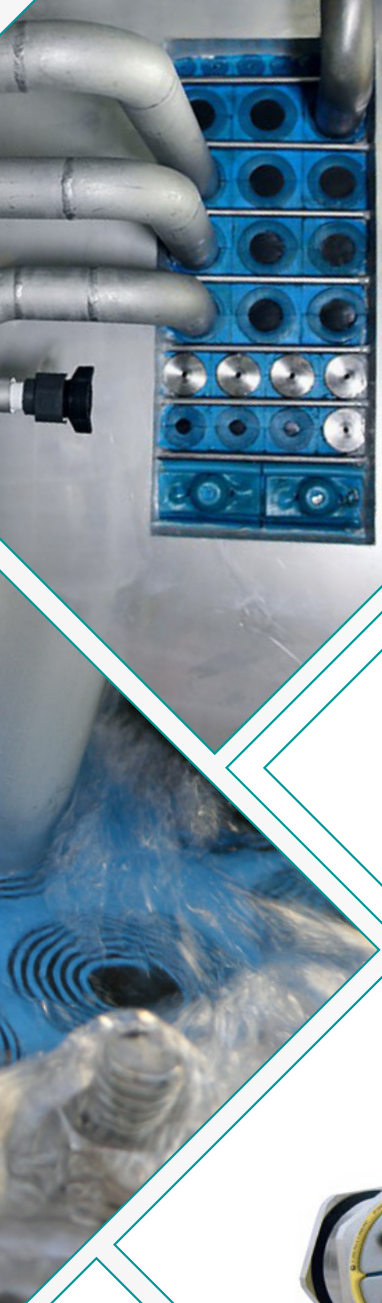


**GLAKOR**<sup>®</sup>  
INTELLIGENT CABLE GLANDS



EX SEALING SYSTEM ATEX

**ROXTEC**



Paso del Prao, 6. 01320 Oyón (Álava). Spain  
+34 945 601 381  
comercial@glakor.com | [www.cableglandsfast.com](http://www.cableglandsfast.com) | [www.glakor.com](http://www.glakor.com)

1.20



INTELLIGENT CABLE GLANDS

## CONTACT US

Confidentiality, reliability & quality

[www.glakor.com](http://www.glakor.com)

[www.cableglandsfast.com](http://www.cableglandsfast.com)

[comercial@glakor.com](mailto:comercial@glakor.com)

+34 945 601 381

## WE PUT AT YOUR DISPOSAL

We offer over **45 years** providing solutions to demanding customers who require very specific characteristics and behaviour according to the sector and their needs

## WHEREVER YOU GO

We are committed to working closely with our customers, providing them with **exceptional service** and offering an advanced and extensive range of products with very competitive prices

## HIGH STANDARD OF QUALITY AND SERVICES

We only use materials provided by companies who offer the very **highest quality**, suitable and certified products. Our success is due to **top quality** assurance: ISO 9001, SGS, UL, TÜV, ISO 14000 and OHSAS 18001

## PLEASE CONTACT OUR TECHNICAL SALES DEPARTMENT

A team of professionals with high experience and ability to solve all your queries





## EX SEALING SYSTEM EX EY EX TD

The Roxtec Ex cable sealing system is certified according to the ATEX directive and the IECEx, International Certification Scheme, for use in areas where explosive atmospheres are likely to occur. Roxtec Ex e products are designed to prevent ignition of explosive atmospheres. Typical applications are Ex e and/or Ex tD classified electrical enclosures, such as transformers, motors, generators and junction boxes.



## APPLICATIONS

- Petro-chemical and chemical industries
- Mills, concrete plants
- Spray booth plants
- OEM producers intending to supply to areas where the ATEX product directive applies.
- Silo works
- All other industries where areas have been zone classified according to marked areas in the chart below.

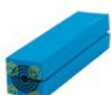


AREAS	CLASSIFICATION OF EXPLOSION RISK	LABELING REQUIRED FOR ELECTRICAL EQUIPMENT	
		Computer group category	Category
Mining	Operating	I	M1
Mining	Off	I	M2 o M1
No mining	Zone 0	II	IG
No mining	Zone 1	II	2G o IG
No mining	Zone 2	II	3G, 2G o IG
No mining	Zone 20	II	ID
No mining	Zone 21	II	2D o ID
No mining	Zone 22	II	3D, 2D o ID

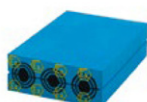


# EX SEALING SYSTEM RM EX MODULES WITHOUT CORE

RM 15 Ex  
EXRM00100151000



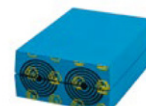
RM 15w40 Ex \*)  
EXRM00115401000



RM 20 Ex  
EXRM00100201000



RM 20w40 Ex \*)  
EXRM00120401000



RM 30 Ex  
EXRM00100301000



RM 40 Ex  
EXRM00100401000



RM 40 10-32 Ex  
EXRM00140101000



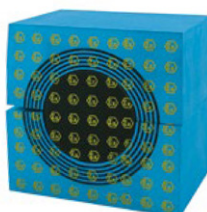
RM 60 Ex  
EXRM00100601000



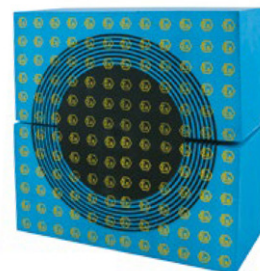
RM 60 24-54 Ex  
EXRM00160201000



RM 90 Ex  
EXRM00100901000



RM 120 Ex  
EXRM00101201000



MODULE	NUMBER OF CABLES / PIPES	FOR CABLE / PIPE DIAMETER ØA - ØB (mm)   ØA - ØB (")		EXTERNAL DIM. (mm) HXW (D=60 mm)
RM 15 Ex	1	0+3.0-11.0	0+0.118-0.433	15x15
RM 15w40 Ex *)	3	0+3.5-10.5	0+0.138-0.413	15x40
RM 20 Ex	1	0+4.0-14.5	0+0.157-0.571	20x20
RM 20w40 Ex *)	2	0+3.5-16.5	0+0.138-0.650	20x40
RM 30 Ex	1	0+10.0-25.0	0+0.394-0.984	30x30
RM 40 Ex	1	0+21.5-34.5	0+0.846-1.358	40x40
RM 40 10-32 Ex	1	0+9.5-32.5	0+0.374-1.280	40x40
RM 60 Ex	1	0+28.0-54.0	0+1.102-2.126	60x60
RM 60 24-54 Ex	1	0+24.0-54.0	0+0.945-2.126	60x60
RM 90 Ex	1	0+48.0-71.0	0+1.890-2.795	90x90
RM 120 Ex	1	0+67.5-99.0	0+2.657-3.898	120x120

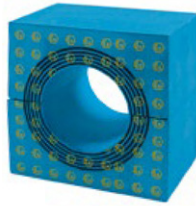


# EX SEALING SYSTEM RM EX MODULES WITHOUT CORE

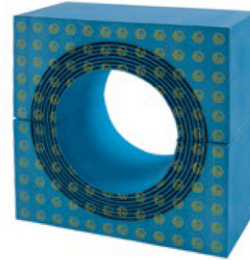
RM 60 Ex woc  
EXRM00000601000



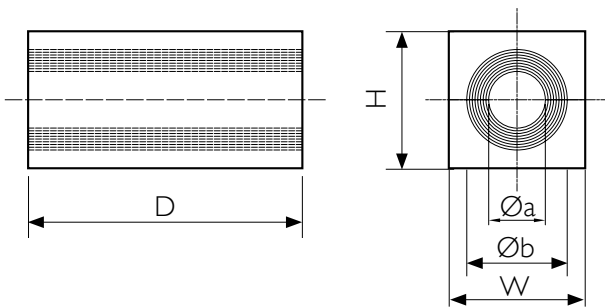
RM 90 Ex woc  
EXRM00000901000



RM 120 Ex woc  
EXRM00001201000

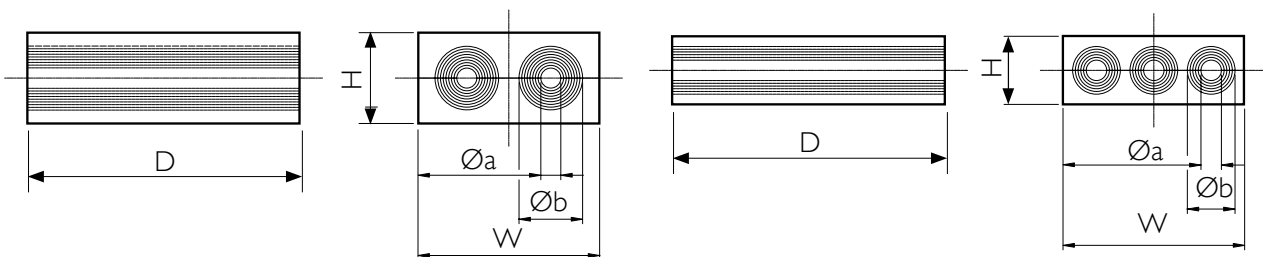


MODULE	N° OF CABLES / PIPES	FOR CABLE / PIPE DIAMETER ØA - ØB (mm)   ØA - ØB (")		EXTERNAL DIM. (mm) HXW (D=60 mm)
RM 60 Ex woc	1	28.0-54.0	1.102-2.126	60x60
RM 90 Ex woc	1	48.0-71.0	1.890-2.795	90x90
RM 120 Ex woc	1	67.5-99.0	2.657-3.898	120x120



POS	
Øa	Min. cable/pipe diameter
Øb	Max. cable/pipe diameter
D	60 mm   2.362"

Note: All dimensions are nominal values





# EX SEALING SYSTEM SOLID COMPENSATION MODULES EX

RM 30/0 Ex  
EXRM00300301000



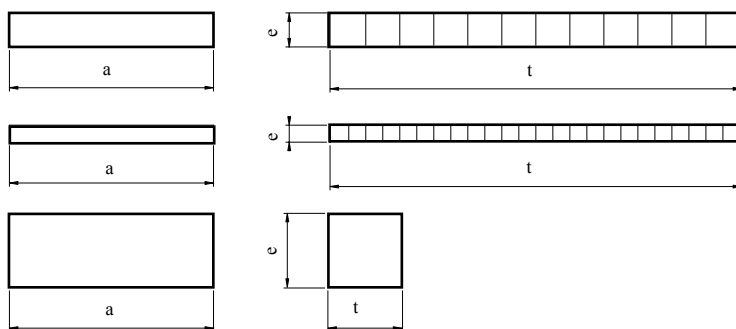
RM 5/0x24 Ex  
EXRM00305241000



RM 10/0x12 Ex  
EXRM00310121000



MODULE	WEIGHT		EXTERNAL DIM. (mm) HxW (D=60 mm)
	( Kg )	( Lb )	
RM 5/0x24 Ex	0.06	0.126	5x120
RM 10/0x 12 Ex	0.12	0.256	10x120
RM 15/0 Ex	0.02	0.049	15x15
RM 20/0 Ex	0.04	0.086	20x20
RM 30/0 Ex	0.08	0.179	30x30
RM 40/0 Ex	0.15	0.320	40x40
RM 60/0 Ex	0.33	0.719	60x60
RM 30H90/0 Ex*	0.24	0.537	90x30



POS	(mm)	(")
D	60	2.362"

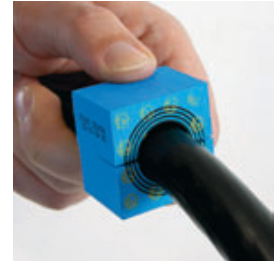
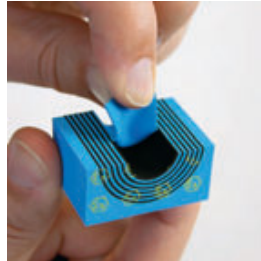
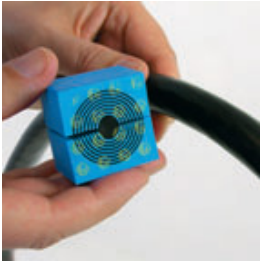
Note: All dimensions are nominal values

## SMART TIP

Consider using an RM module rather than a solid module. A Roxtec RM module installed with a solid centre core, serves the same purpose as a traditional solid module, plus it provides spare capacity for future installations.



## EX SEALING SYSTEM ROXTEC CM EX MODULES



Sealing modules for use with Roxtec Ex frames. The modules include Multidiameter™, the Roxtec technology based on removable layers, for perfect adaptation to different sizes of cables. When used with a solid core, the module functions as a spare module for future capacity.

- For use with Group CM components
- Adaptable sealing modules for cables 3.5-32.5mm (0.138"-1.280") OD

CM 15w40 Ex \*)  
EXC000115401000



CM 20w40 Ex \*)  
EXC000120401000



CM 30w40 Ex  
EXC000130401000



CM 40 10-32 Ex  
EXC000140101000



MODULE	N° OF CABLES / PIPES	FOR CABLE/PIPE DIAMETER ØA - ØB (mm)   ØA - ØB (")		EXTERNAL DIM. (mm) HXW (D=30 mm)	WEIGHT	
					(Kg)	(Lb)
CM 15w40 Ex *)	3	0+ 3.5-10.5	0+ 0.138-0.413	15x40	0.02 - 0.03	0.044 - 0.055
CM 20w40 Ex *)	2	0+ 3.5-16.5	0+ 0.138-0.650	20x40	0.02 - 0.04	0.044 - 0.077
CM 30w40 Ex	1	0+ 10.0-25.0	0+ 0.394-0.984	30x40	0.04 - 0.06	0.077 - 0.121
CM 40 10-32 Ex	1	0+ 9.5-32.5	0+ 0.374-1.280	40x40	0.04 - 0.07	0.077 - 0.135

### SMART TIP

Whenever possible we recommend choosing twin or triplet modules like CM 15w40 Ex or CM 20w40 Ex. Benefits are an even higher area efficiency per frame opening, quicker installation and increased cost effectiveness.





# EX SEALING SYSTEM CM SOLID COMPENSATION MODULES EX

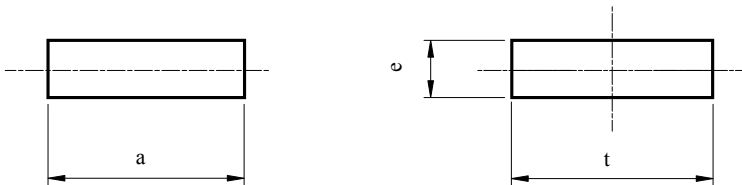
CM 5w40/0 Ex  
EXC000305401000



CM 10w40/0 Ex  
EXC000110401000



MODULE	WEIGHT		EXTERNAL DIM. (mm) HxW (D=30 mm)
	( Kg )	( Lb )	
CM 5w40/0 Ex	0.01	0.022	5x40
CM 10w40/0 Ex	0.02	0.044	10x40



POS	(mm)	(")
D	30	1.181

Note: All dimensions are nominal values

## SMART TIP

Consider using an RM module rather than a solid module. A Roxtec RM module installed with a solid centre core, serves the same purpose as a traditional solid module, plus it provides spare capacity for future installations.





# EX SEALING SYSTEM S EX

## S EX FRAMES, PRIMED, MILD STEEL

Roxtec S Ex frame is a metal frame available as a single opening, or in combinations with several openings in width and / or height.

- For use with Group RM components
- Attachment by welding



S 6x1 Ex Primed  
EXS006000000112

FRAME	N° OF CABLES / PIPES	USEFUL SEALING SPACE (mm)	EXTERNAL DIM. (D=60 mm) HxW (mm)   HxW (")		WEIGHT MIN – MAX	
					( Kg )	( Lb )
S 2x1 Ex primed	1	60 x 120	121 x 141	4.764 x 5.551	2.2	4.938
S 4x1 Ex primed	1	120 x 120	180 x 141	7.087 x 5.551	2.8	6.151
S 4x2 Ex primed	2	120 x 120	180 x 271	7.087 x 10.669	4.7	10.318
S 4x3 Ex primed	3	120 x 120	180 x 402	7.087 x 15.827	6.6	14.484
S 4x4 Ex primed	4	120 x 120	180 x 532	7.087 x 20.945	8.5	18.629
S 4x5 Ex primed	5	120 x 120	180 x 663	7.087 x 26.102	10.3	22.796
S 4+4x1 Ex primed	2	120x120	349x141	13.740x5.551	5.0	11.067
S 4+4x2 Ex primed	4	120x120	359x271	14.134x10.669	9.5	20.878
S 4+4x3 Ex primed	6	120x120	359x402	14.134x15.827	13.5	29.321
S 4+4x4 Ex primed	8	120x120	359x532	14.134x20.945	17.1	37.743
S 4+4+4x1 Ex primed	3	120x120	519x141	20.433x5.551	6.6	14.550
S 4+4+4x2 Ex primed	6	120x120	539x271	21.220x10.669	14.2	31.305
S 4+4+4x3 Ex primed	9	120x120	539x402	21.220x15.827	19.9	43.872
S 4+4+4x4 Ex primed	12	120x120	539x532	21.220x20.945	26.2	57.761
S 6x1 Ex primed	1	180 x 120	238 x 141	9.370 x 5.551	3.3	7.363
S 6x2 Ex primed	2	180 x 120	238 x 271	9.370 x 10.669	5.5	12.147
S 6x3 Ex primed	3	180 x 120	238 x 402	9.370 x 15.827	7.7	16.909
S 6x4 Ex primed	4	180 x 120	238 x 532	9.370 x 20.945	9.8	21.671
S 6x5 Ex primed	5	180 x 120	238 x 663	9.370 x 26.102	12.0	26.455
S 6+6+6x1 Ex primed	3	180 x 120	694x141	27.323x5.551	8.2	18.078
S 8x1 Ex primed	1	240 x 120	298 x 141	11.732 x 5.551	3.9	8.620
S 8x2 Ex primed	2	240 x 120	298 x 271	11.732 x 10.669	6.1	13.382
S 8x3 Ex primed	3	240 x 120	298 x 402	11.732 x 15.827	8.2	18.144
S 8x4 Ex primed	4	240 x 120	298 x 532	11.732 x 20.945	10.4	22.928
S 8x5 Ex primed	5	240 x 120	298 x 663	11.732 x 26.102	12.6	27.690
S 8+8x1 Ex primed	2	240 x 120	586x141	23.071x5.551	7.3	16.005
S 8+8x2 Ex primed	4	240 x 120	596x271	23.465x10.669	12.3	27.006
S 8+8x3 Ex primed	6	240 x 120	596x402	23.465x15.827	16.6	36.640
S 8+8x4 Ex primed	8	240 x 120	596x532	23.465x20.945	21.0	46.341
S 8+8+8x1 Ex primed	3	240x120	874x141	34.409x5.551	9.9	21.826

# EX SEALING SYSTEM S EX

## S EX FRAMES, ACID PROOF STAINLESS STEEL

Roxtec S Ex frame is a metal frame available as a single opening, or in combinations with several openings in width and / or height.

- For use with Group RM components
- Attachment by welding

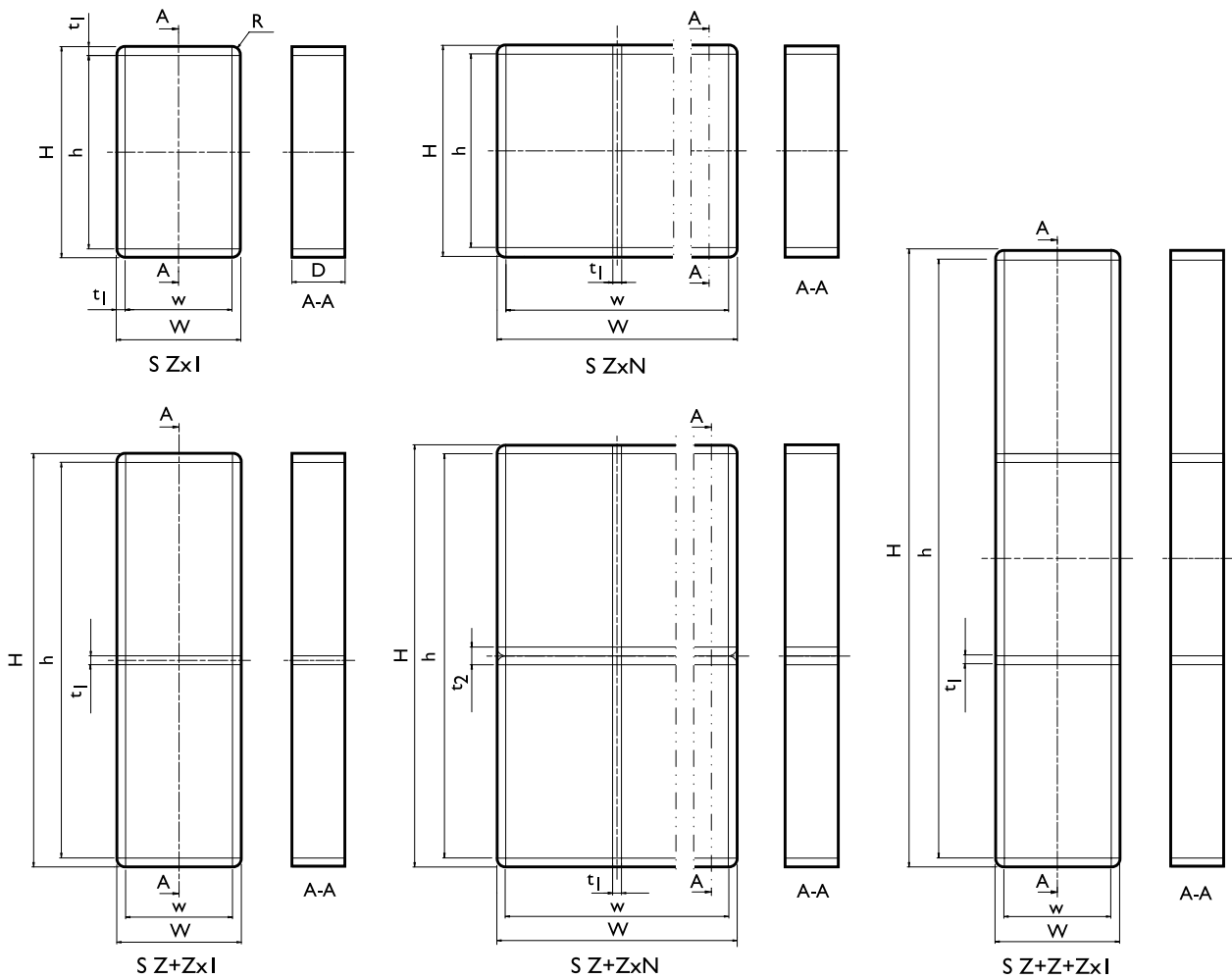


S 6x1 Ex AISI 316  
EXS006000000121

FRAME	N° OF CABLES / PIPES	USEFUL SEALING SPACE (mm)	EXTERNAL DIM. (D=60 mm) HxW (mm) † HxW (")		WEIGHT MIN – MAX	
					( Kg )	(Lb)
S 2x1 Ex AISI 316	1	60 x 120	121 x 141	4.764 x 5.551	2.2	4.938
S 4x1 Ex AISI 316	1	120 x 120	180 x 141	7.087 x 5.551	2.8	6.151
S 4x2 Ex AISI 316	2	120 x 120	180 x 271	7.087 x 10.669	4.7	10.318
S 4x3 Ex AISI 316	3	120 x 120	180 x 402	7.087 x 15.827	6.6	14.484
S 4x4 Ex AISI 316	4	120 x 120	180 x 532	7.087 x 20.945	8.5	18.629
S 4x5 Ex AISI 316	5	120 x 120	180 x 663	7.087 x 26.102	10.3	22.796
S 4+4x1 Ex AISI 316	2	120x120	349x141	13.740x5.551	5.0	11.067
S 4+4x2 Ex AISI 316	3	120x120	359x271	20.433x5.551	6.6	14.550
S 6x1 Ex AISI 316	1	180x120	238x141	9.370 x 5.551	3.3	7.363
S 6x2 Ex AISI 316	2	180x120	238x271	9.370 x 10.669	5.5	12.147
S 6x3 Ex AISI 316	3	180x120	238x402	9.370 x 15.827	7.7	16.909
S 6x4 Ex AISI 316	4	180x120	238x538	9.370 x 20.945	9.8	21.671
S 6x5 Ex AISI 316	5	180x120	238x663	9.370 x 26.102	12.0	26.455
S 6+6x1 Ex AISI 316	2	180 x 120	466 x 141	18.346x5.551	6.1	13.492
S 6+6x2 Ex AISI 316	4	180 x 120	476 x 271	18.740x10.669	11.1	24.537
S 6+6x3 Ex AISI 316	6	180 x 120	476 x 402	18.740x15.827	15.5	34.171
S 6+6x4 Ex AISI 316	8	180 x 120	476 x 532	18.740x20.945	19.9	43.872
S 8x1 Ex AISI 316	1	240 x 120	298 x 141	11.732 x 5.551	3.9	8.620
S 8x2 Ex AISI 316	2	240 x 120	298 x 271	11.732 x 10.669	6.1	13.382
S 8x3 Ex AISI 316	3	240 x 120	298 x 402	11.732 x 15.827	8.2	18.144
S 8x4 Ex AISI 316	4	240 x 120	298 x 532	11.732 x 20.945	10.4	22.928
S 8x5 Ex AISI 316	5	240 x 120	298 x 663	11.732 x 26.102	12.6	27.690
S 8+8x1 Ex AISI 316	2	240 x 120	586x141	23.071x5.551	7.3	16.005
S 8+8+8x1 Ex AISI 316	3	240 x 120	874x141	34.409x5.551	9.9	21.826

# EX SEALING SYSTEM S EX

## TECHNICAL INFORMATION



Z: Frame size

N: Number of horizontal openings

Note: All dimensions are nominal values

POS	(mm)	(")
h	H - 20	H - 0.787
w	W - 20	W - 0.787
D	60	2.362
t1	10	0.394
t2	20	0.787
R	R 10	R 0.394



# EX SEALING SYSTEM FRAME SF..W EX

## SF..W EX FRAMES, METAL

Roxtec SF..W Ex frame is a metal frame with flange. Available as a single opening, or in combinations with several openings in width and / or height.

- For use with Group RM components
- Attachment by welding



SF 6x1 W Ex primed  
EXSFF6000000112

FRAME	N° OF CABLES / PIPES	USEFUL SEALING SPACE (mm)	EXTERNAL DIM. (D=60 mm) HxW (mm)   HxW (")		WEIGHT	
					( Kg )	( Lb )
SF 2x1 W Ex primed	1	60 x 120	241 x 261	9.488 x 10.276	6.0	13.184
SF 4x1 W Ex primed	1	120 x 120	300 x 261	11.811 x 10.276	7.1	15.675
SF 4x2 W Ex primed	2	120 x 120	300 x 391	11.811 x 15.394	10.4	22.862
SF 4x3 W Ex primed	3	120 x 120	300 x 522	11.811 x 20.551	13.6	30.049
SF 4x4 W Ex primed	4	120 x 120	300 x 652	11.811 x 25.669	16.9	37.236
SF 4x5 W Ex primed	5	120 x 120	300 x 783	11.811 x 30.827	20.2	44.423
SF 4+4x1 W Ex primed	2	120x120	469 x 261	18.465x10.276	10.9	24.118
SF 4+4+4x1 W Ex primed	3	120x120	639 x 261	25.157x10.276	14.8	32.540
SF 6x1 W Ex primed	1	180x120	358 x 261	14.095 x 10.276	8.2	18.144
SF 6x2 W Ex primed	2	180x120	358 x 391	14.095 x 15.394	11.8	25.948
SF 6x3 W Ex primed	3	180x120	358 x 522	14.095 x 20.551	15.3	33.752
SF 6x4 W Ex primed	4	180x120	358 x 652	14.095 x 25.669	18.8	41.557
SF 6x5 W Ex primed	5	180x120	358 x 783	14.095 x 30.827	22.4	49.339
SF 6+6x1 W Ex primed	2	180 x 120	586x261	23.071x10.276	13.1	28.968
SF 6+6x2 W Ex primed	4	180 x 120	596x391	23.465x15.394	19.6	43.320
SF 6+6x3 W Ex primed	6	180 x 120	596x522	23.465x20.551	25.4	56.107
SF 6+6x4 W Ex primed	8	180 x 120	596x652	23.465x25.669	31.2	68.872
SF 6+6+6x1 W Ex primed	3	180 x 120	814x261	32.047x10.276	3.9	8.620
SF 8x1 W Ex primed	1	240 x 120	418 x 261	16.457 x 10.276	9.4	20.701
SF 8x2 W Ex primed	2	240 x 120	418 x 391	16.457 x 15.394	13.2	29.123
SF 8x3 W Ex primed	3	240 x 120	418 x 522	16.457 x 20.551	17.0	37.544
SF 8x4 W Ex primed	4	240 x 120	418 x 652	16.457 x 25.669	20.8	45.966
SF 8x5 W Ex primed	5	240 x 120	418 x 783	16.457 x 30.827	24.7	54.387
SF 8+8x1 W Ex primed	2	240 x 120	706 x 261	27.795x10.276	15.5	34.171
SF 8+8x2 W Ex primed	4	240 x 120	716 x 391	28.189x15.394	22.6	49.758
SF 8+8x3 W Ex primed	6	240 x 120	716x 522	28.189x20.551	28.9	63.779
SF 8+8x4 W Ex primed	8	240 x 120	716x 652	28.189x25.669	35.3	77.800

# EX SEALING SYSTEM FRAME SF..W EX

## SF..W EX FRAMES, ACID-PROOF STAINLESS STEEL

Roxtec SF..W Ex frame is a metal frame with flange.  
Available as a single opening, or in combinations with several openings in width and / or height.

- For use with Group RM components
- Attachment by welding



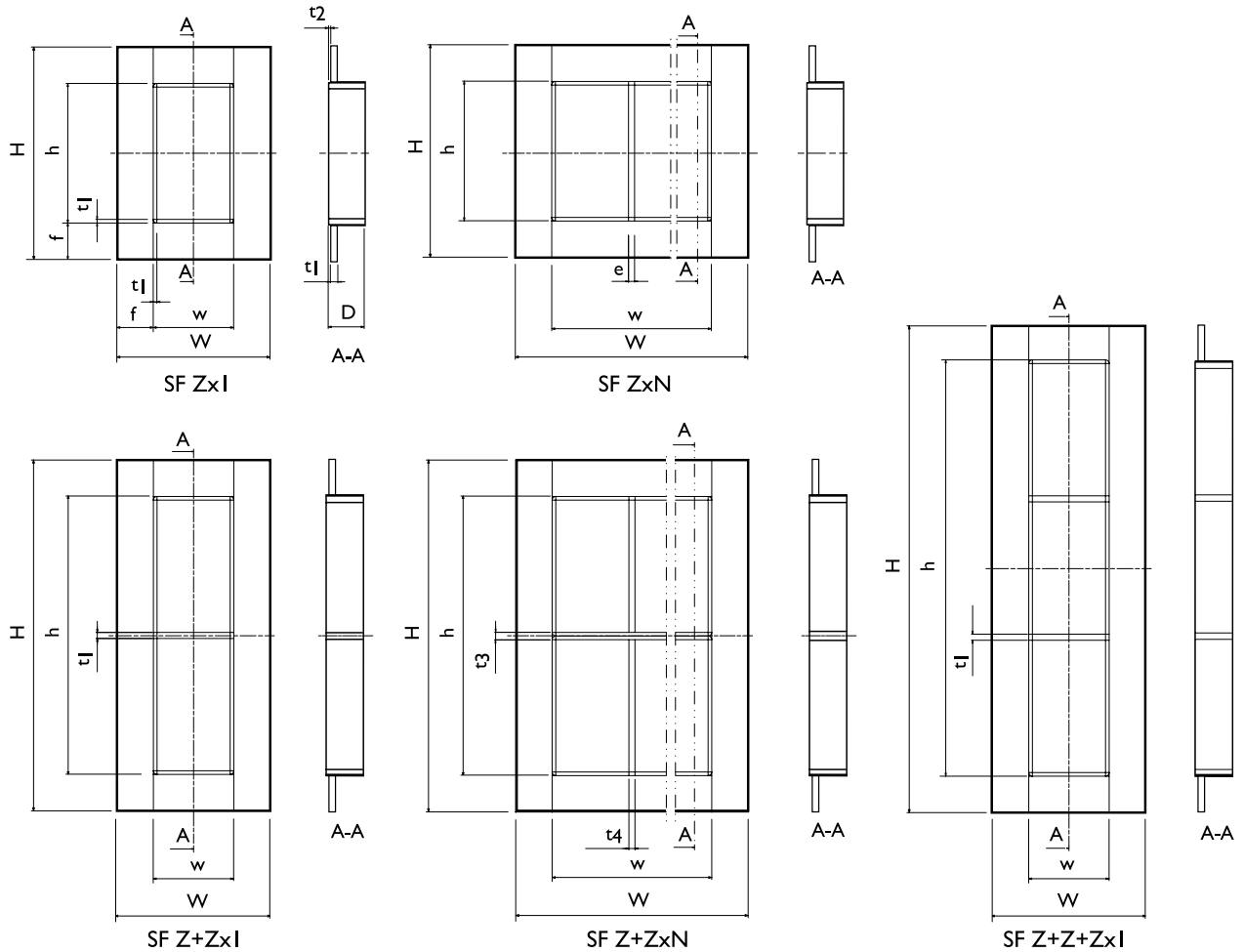
SF 6x1 W Ex AISI 316  
EXSFF6000000121

FRAME	FRAME OPENINGS	USEFUL SEALING SPACE (mm)	EXTERNAL DIM. (D=60 mm) HxW (mm)   HxW (")		WEIGHT MIN – MAX	
					(Kg)	(Lb)
SF 2x1 W Ex primed	1	60 x 120	241 x 261	9.488 x 10.276	6.0	13.184
SF 4x1 W Ex primed	1	120 x 120	300 x 261	11.811 x 10.276	7.1	15.675
SF 4x2 W Ex primed	2	120 x 120	300 x 391	11.811 x 15.394	10.4	22.862
SF 4x3 W Ex primed	3	120 x 120	300 x 522	11.811 x 20.551	13.6	30.049
SF 4x4 W Ex primed	4	120 x 120	300 x 652	11.811 x 25.669	16.9	37.236
SF 4x1 W Ex primed	1	180x120	358 x 261	14.095 x 10.276	8.2	18.144
SF 4x2 W Ex primed	2	180x120	358 x 391	14.095 x 15.394	11.8	25.948
SF 4x3 W Ex primed	3	180x120	358 x 522	14.095 x 20.551	15.3	33.752
SF 4x4 W Ex primed	4	180x120	358 x 652	14.095 x 25.669	18.8	41.557
SF 6x1 W Ex primed	1	240x120	418 x 261	16.457 x 10.276	9.4	20.701
SF 6x2 W Ex primed	2	240x120	418 x 391	16.457 x 15.394	13.2	29.123
SF 6x3 W Ex primed	3	240x120	418 x 522	16.457 x 20.551	17.0	37.544
SF 6x4 W Ex primed	4	240x120	418 x 652	16.457 x 25.669	20.8	45.966



# EX SEALING SYSTEM FRAME SF..W EX

## TECHNICAL INFORMATION



Z: Frame size  
N: Number of horizontal openings

Note: All dimensions are nominal values

POS	(mm)	(")
h	H - 120	H - 4.724
w	W - 120	W - 4.724
D	60	2.362
f	60	2.362
t1	10	0.394
t2	3	0.118
t3	20	0.787



# EX SEALING SYSTEM G EX

## G EX FRAMES, METAL

The Roxtec G Ex is a flanged metal frame intended for bolting into place. The frame with its gasket is attached to the intended place by means of screws through pre-drilled holes (in the frame and the gasket).



G 6x1 Ex primed  
EXG006000000112



FRAME	FRAME OPENINGS	USEFUL SEALING SPACE (mm)	EXTERNAL DIM. (D=60 mm) HxW (mm)   HxW (")		WEIGHT MIN – MAX	
					(Kg)	(Lb)
G 2x1 Ex primed	1	60 x 120	221 x 241	8.701 x 9.488	3.4	6.834
G 4x1 Ex primed	1	120 x 120	280 x 241	11.024 x 9.488	4.1	8.377
G 4x2 Ex primed	2	120 x 120	292 x 383	11.496 x 15.079	6.3	13.977
G 4x3 Ex primed	3	120 x 120	292 x 514	11.496 x 20.236	8.6	18.938
G 4x4 Ex primed	4	120 x 120	292 x 644	11.496 x 25.354	10.8	23.898
G 4x5 Ex primed	5	120 x 120	292 x 775	11.496 x 30.512	13.1	28.858
G 4+4x1 Ex primed	2	120 x 120	461 x 253	8.150x9.961	6.9	15.212
G 4+4x2 Ex primed	4	120 x 120	463 x 383	8.228x15.079	11.0	24.251
G 4+4x3 Ex primed	6	120 x 120	463 x 514	8.228x20.236	15.0	33.069
G 4+4x4 Ex primed	8	120 x 120	463 x 644	8.228x25.354	18.5	40.785
G 4+4+4x1 Ex primed	3	120 x 120	631 x 253	24.843x9.961	9.8	21.605
G 6x1 Ex primed	1	180 x 120	338 x 241	13.307 x 9.488	4.8	9.700
G 6x2 Ex primed	2	180 x 120	350 x 383	13.780 x 15.079	7.3	16.072
G 6x3 Ex primed	3	180 x 120	350 x 514	13.780 x 20.236	9.8	21.627
G 6x4 Ex primed	4	180 x 120	350 x 644	13.780 x 25.354	12.3	27.205
G 6x5 Ex primed	5	180 x 120	350 x 775	13.780 x 30.512	14.9	32.760
G 6+6x1 Ex primed	2	180x120	578x253	22.756x9.961	8.7	19.180
G 6+6x2 Ex primed	4	180x120	580x383	22.835x15.079	13.1	28.880
G 6+6x3 Ex primed	6	180x120	580x514	22.835x20.236	17.3	38.140
G 6+6x4 Ex primed	8	180x120	580x644	22.835x25.354	21.7	47.840
G 6+6x5 Ex primed	10	180x120	580x775	22.835x30.512	26.2	57.761
G 6+6+6x1 Ex primed	3	180x120	806x253	31.732x9.961	12.0	26.455
G 8x1 Ex primed	1	240 x 120	398 x 241	15.669 x 9.488	5.5	11.243
G 8x2 Ex primed	2	240 x 120	410 x 383	16.142 x 15.079	8.5	18.210
G 8x3 Ex primed	3	240 x 120	410 x 514	16.142 x 20.236	11.1	24.405
G 8x4 Ex primed	4	240 x 120	410 x 644	16.142 x 25.354	13.9	30.578



# EX SEALING SYSTEM G EX

## G EX FRAMES, GALVANIZED, MILD STEEL

The Roxtec G Ex is a flanged metal frame intended for bolting into place. The frame with its gasket is attached to the intended place by means of screws through pre-drilled holes (in the frame and the gasket).



G 6x1 Ex galv  
EXG006000000115

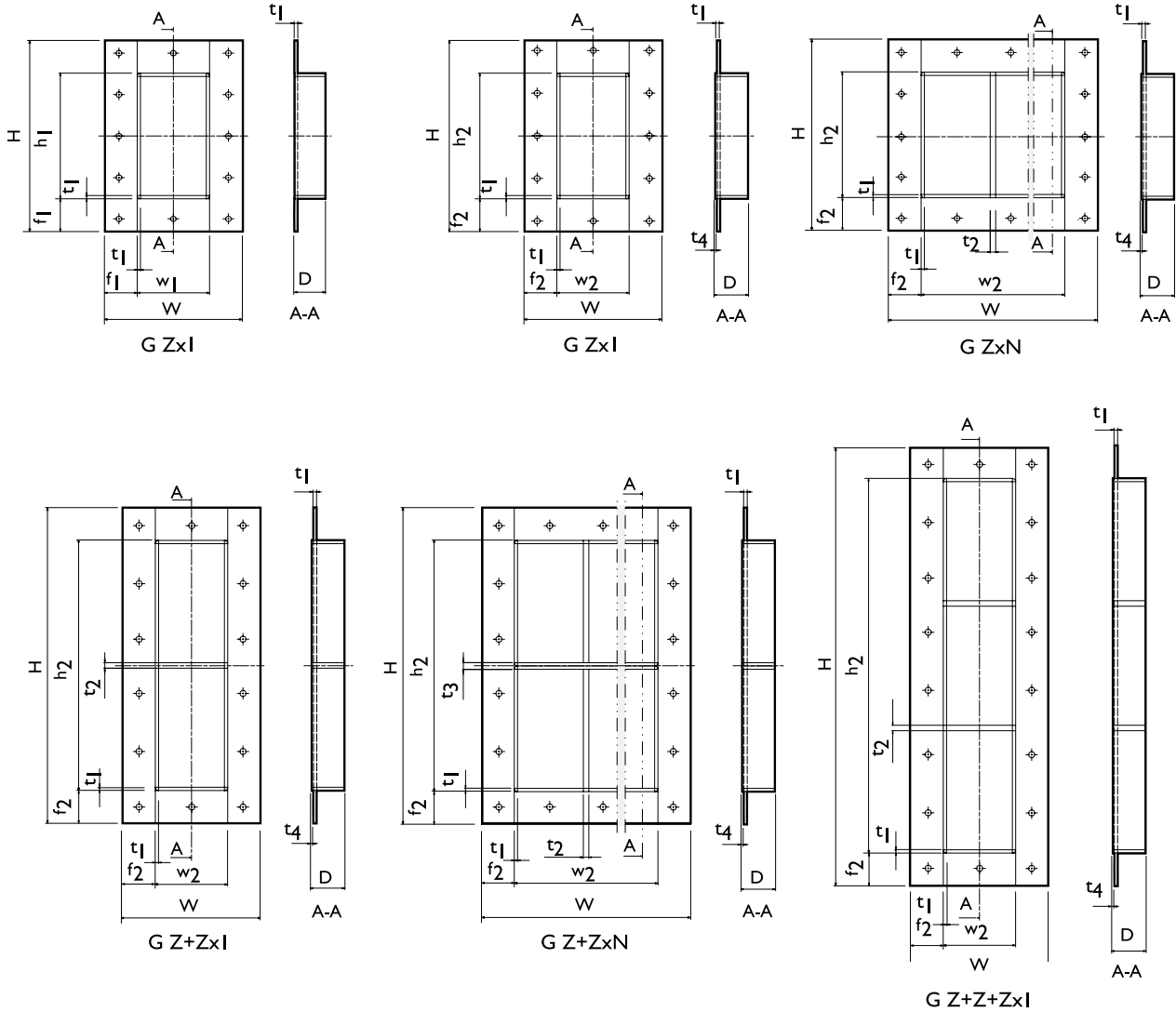
FRAME	FRAME OPENINGS	USEFUL SEALING SPACE (mm)	EXTERNAL DIM. (D=60 mm) HxW (mm)   HxW (")		WEIGHT MIN – MAX	
					(Kg)	(Lb)
G 2x1 Ex galv	1	60 x 120	221 x 241	8.701 x 9.488	3.4	6.834
G 4x1 Ex galv	1	120 x 120	280 x 241	11.024 x 9.488	4.1	8.377
G 4x2 Ex galv	2	120 x 120	292 x 383	11.496 x 15.079	6.3	13.977
G 4x3 Ex galv	3	120 x 120	292 x 514	11.496 x 20.236	8.6	18.938
G 4x4 Ex galv	4	120 x 120	292 x 644	11.496 x 25.354	10.8	23.898
G 4x5 Ex galv	5	120 x 120	292 x 775	11.496 x 30.512	13.1	28.858
G 4+4x1 Ex gal	2	120 x 120	461 x 253	8.150x9.961	6.9	15.212
G 4+4+4x1 Ex galv	3	120 x 120	631 x 253	24.843x9.961	11.0	21.605
G 6x1 Ex galv	1	180 x 120	338 x 241	13.307 x 9.488	4.8	9.700
G 6x2 Ex galv	2	180 x 120	350 x 383	13.780 x 15.079	7.3	16.072
G 6x3 Ex galv	3	180 x 120	350 x 514	13.780 x 20.236	9.8	21.627
G 6x4 Ex galv	4	180 x 120	350 x 644	13.780 x 25.354	12.3	27.205
G 6x5 Ex galv	5	180 x 120	350 x 775	13.780 x 30.512	14.9	32.760
G 6+6x1 Ex galv	2	180 x 120	578 x 253	22.756 x 9.961	8.7	19.180
G 6+6+6x1 Ex galv	3	180 x 120	806 x 253	31.732 x 9.961	12.0	26.455
G 8x1 Ex galv	1	240 x 120	398 x 241	15.669 x 9.488	5.5	11.243
G 8x2 Ex galv	2	240 x 120	410 x 383	16.142 x 15.079	8.3	18.210
G 8x3 Ex galv	3	240 x 120	410 x 514	16.142 x 20.236	11.1	24.405
G 8x4 Ex galv	4	240 x 120	410 x 644	16.142 x 25.354	13.9	30.578

## G EX FRAMES, ACID-PROOF, STAINLESS STEEL

FRAME	FRAME OPENINGS	USEFUL SEALING SPACE (mm)	EXTERNAL DIM. (D=60 mm) HxW (mm)   HxW (")		WEIGHT MIN – MAX	
					(Kg)	(Lb)
G 2x1 Ex AISI 316	1	60 x 120	233 x 253	9.173 x 9.961	3.4	7.562
G 4x1 Ex AISI 316	1	120 x 120	292 x 253	11.496 x 9.961	4.1	9.039
G 4x2 Ex AISI 316	2	120 x 120	292 x 383	11.496 x 15.079	6.3	13.977
G 4x3 Ex AISI 316	3	120 x 120	292 x 514	11.496 x 20.236	8.6	18.938
G 4x4 Ex AISI 316	4	120 x 120	292 x 644	11.496 x 25.354	10.8	23.898
G 6x1 Ex AISI 316	1	180 x 120	350 x 253	13.780 x 9.961	4.8	10.516
G 6x2 Ex AISI 316	2	180 x 120	350 x 383	13.780 x 15.079	7.3	16.072
G 6x3 Ex AISI 316	3	180 x 120	350 x 514	13.780 x 20.236	9.8	21.627
G 6x4 Ex AISI 316	4	180 x 120	350 x 644	13.780 x 25.354	12.4	27.205
G 8x1 Ex AISI 316	1	240 x 120	410 x 253	16.142 x 9.961	5.5	12.037
G 8x2 Ex AISI 316	2	240 x 120	410 x 383	16.142 x 15.079	8.3	18.210
G 8x3 Ex AISI 316	3	240 x 120	410 x 514	16.142 x 20.236	11.1	24.405
G 8x4 Ex AISI 316	4	240 x 120	410 x 644	16.142 x 25.354	13.9	30.578

# EX SEALING SYSTEM G EX

## TECHNICAL INFORMATION



Z: Frame size  
N: Number of horizontal openings

Note: All dimensions are nominal values

POS	(mm)	(")
h1	H - 108	H - 4.724
h2	H - 120	H - 4.724
w1	W - 108	W - 4.724
w2	W - 120	W - 4.724
D	60	2.362
f1	54	2.126
f2	60	2.362
t1	6	0.263
t2	10	0.394
t3	12	0.394
t4	3	0.118



## EX SEALING SYSTEM CF 8 EX/CF 32 EX FRAMES

The Roxtec CF 8 Ex and CF 32 Ex are cast aluminium frames suitable for compact installations in cabinets. The compression is integrated in the frame. CF 8 Ex can accommodate up to 15 cables and CF 32 Ex up to 60 cables.



CF 8 Ex  
EXCSF0000080035

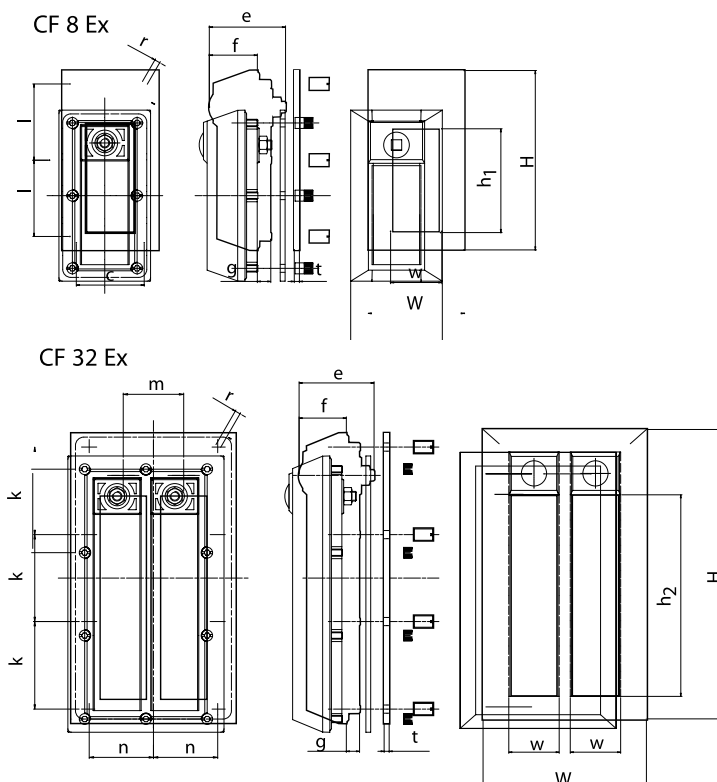


CF 32 Ex  
EXCSF0000320035



FRAME	FRAME OPENINGS	USEFUL SEALING SPACE (mm)	EXTERNAL DIM. (D=60 mm) HxW (mm)   HxW (")		WEIGHT MIN – MAX	
					(Kg)	(Lb)
CF 8 Ex	1	80 x 40	140 x 75	5.512 x 2.952	0.6	1.323
CF 32 Ex	2	160 x 40	230 x 130	9.055 x 5.118	1.4	3.086

## TECHNICAL INFORMATION



Z: Frame size  
N: Number of horizontal openings

Note: All dimensions are nominal values

POS	(mm)	(")
l	60	2.362
r	SW 4	SW 0.157
c	53	2.087
e	59	2.323
f	38	1.496
g	12	0.472
k	70	2.756
m	48	1.890
n	51	2.008
t	4	0.157
h1	80	3.150
h2	160	6.299
w	40	1.575



# EX SEALING SYSTEM CF 16 EX

The CF 16 Ex frame has a very low profile and is suitable for enclosures where many cables need to be routed in areas with limited space. The CF 16 Ex has integrated compression and is ready to accommodate up to 30 cables.



CF 16 Ex  
EXCSF0000160010

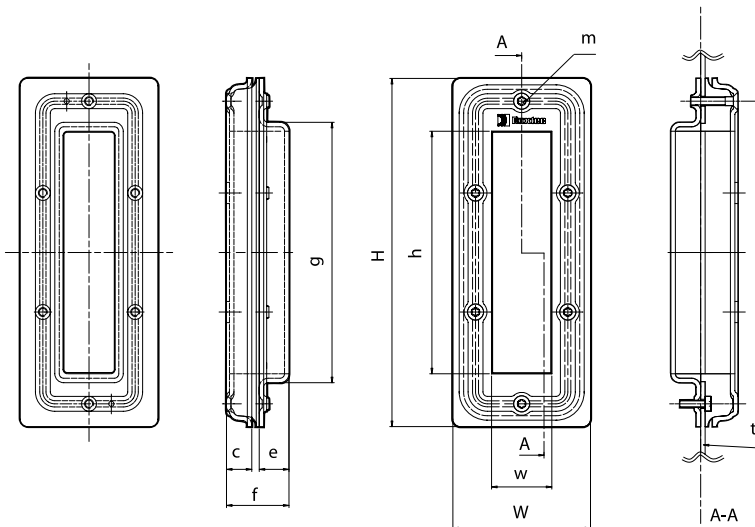


CF 16 Ex AISI 304  
EXCSF0001600021



FRAME	FRAME OPENINGS	USEFUL SEALING SPACE (mm)	EXTERNAL DIM. (D=60 mm) HxW (mm)   HxW (")		WEIGHT MIN – MAX	
					(Kg)	(Lb)
CF 16 Ex	1	160 x 40	234 x 93	9.213 x 3.661	1.4	3.086
CF 16 Ex AISI 304	1	160 x 40	234 x 93	9.213 x 3.661	1.2	2.646

## TECHNICAL INFORMATION



Note: All dimensions are nominal values

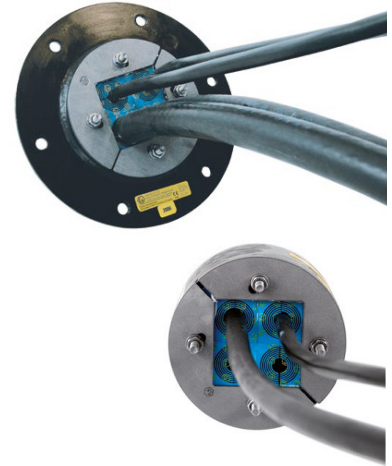
POS	(mm)	(")
c	17	0.669
e	20	0.787
f	42	1.654
g	175	6.890
h	160	6.299
m	SWTX 25	SWTX 25
t	Max 4 mm	Max 0.157
w	40	1.575



## EX SEALING SYSTEM R EX

The Roxtec R Ex is a round expansion frame with a square packing space. The kit includes a sleeve. The sleeves are available in two versions intended for welding or bolting into place. Sleeves with flange has gasket included. The compression is integrated in the frame and is used together with RM Ex modules.

R Ex frames are supplied with a net installed (except R 75 Ex) on the back side as protection during horizontal installations.



R 100 W Ex AISI 316/primed  
EXWR00001002112



R 100 W Ex AISI 316/AISI 316  
EXWR00001002112

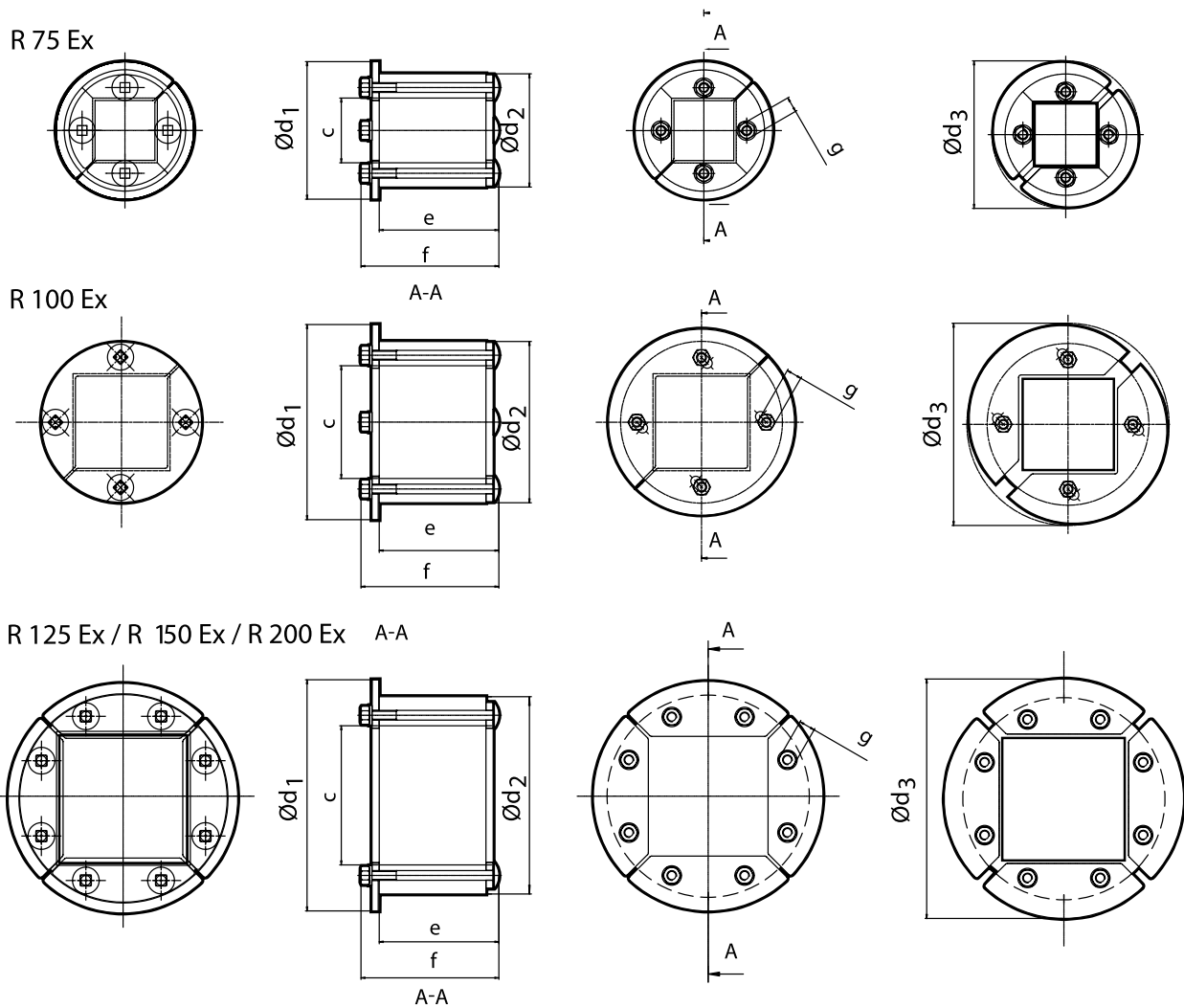
FRAME	USEFUL SEALING SPACE (mm)	EXTERNAL DIM. (D=60 mm) HxW (mm)   HxW (")		SLEEVE SLR*	WEIGHT MIN – MAX	
					( Kg )	( Lb )
with primed mild steel sleeve						
R 75 W Ex AISI 316/primed	40 x 40	75 x 70	2.953 x 2.756	75	1.3	2.866
R 100 W Ex AISI 316/primed	60 x 60	100 x 70	3.937 x 3.346	100	1.7	3.748
R 125 W Ex AISI 316/primed	80 x 80	125 x 70	4.921 x 2.756	125	2.7	5.952
R 150 W Ex AISI 316/primed	90 x 90	150 x 70	5.906 x 2.756	150	3.5	7.716
R 200 W Ex AISI 316/primed	120 x 120	200 x 70	7.874 x 2.756	200	5.3	11.684
with primed mild steel sleeve						
R 75 W Ex AISI 316/AISI 316	40 x 40	75 x 70	2.953 x 2.756	75	4.8	2.866
R 100 W Ex AISI 316/AISI 316	60 x 60	100 x 70	3.937 x 3.346	100	7.3	3.748
R 125 W Ex AISI 316/AISI 316	80 x 80	125 x 70	4.921 x 2.756	125	9.8	5.952
R 150 W Ex AISI 316/AISI 316	90 x 90	150 x 70	5.906 x 2.756	150	12.4	7.716
R 200 W Ex AISI 316/AISI 316	120 x 120	200 x 70	7.874 x 2.756	200	5.5	11.684

# EX SEALING SYSTEM R EX

## R...B EX INCLUDING SLEEVE FOR BOLTING

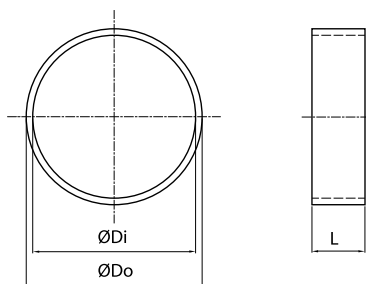
FRAME	USEFUL SEALING SPACE (mm)	EXTERNAL DIM. (D=60 mm) HxW (mm)   HxW (")		SLEEVE SLR*	WEIGHT MIN – MAX	
					( Kg )	( Lb )
with primed mild steel sleeve						
R 75 B Ex AISI 316/primed	40 x 40	75 x 70	2.953 x 2.756	75	1.8	3.968
R 100 B Ex AISI 316/primed	60 x 60	100 x 70	3.937 x 3.346	100	2.4	5.291
R 125 B Ex AISI 316/primed	80 x 80	125 x 70	4.921 x 2.756	125	3.5	7.716
R 150 B Ex AISI 316/primed	90 x 90	150 x 70	5.906 x 2.756	150	4.3	9.480
R 200 B Ex AISI 316/primed	120 x 120	200 x 70	7.874 x 2.756	200	6.4	14.110
with primed mild steel sleeve						
R 75 B Ex AISI 316/AISI 316	40 x 40	75 x 70	2.953 x 2.756	75	1.8	3.968
R 100 B Ex AISI 316/AISI 316	60 x 60	100 x 70	3.937 x 3.346	100	2.4	5.291
R 125 B Ex AISI 316/AISI 316	80 x 80	125 x 70	4.921 x 2.756	125	3.5	7.716
R 150 B Ex AISI 316/AISI 316	90 x 90	150 x 70	5.906 x 2.756	150	4.3	9.480
R 200 B Ex AISI 316/AISI 316	120 x 120	200 x 70	7.874 x 2.756	200	6.4	14.110

## TECHNICAL INFORMATION



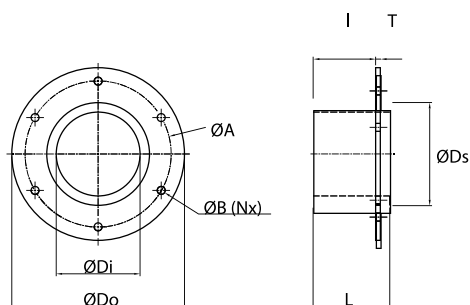
# EX SEALING SYSTEM R EX

WITHOUT FLAN. PRIMED MILD STEEL. ACID PROOF AISI 316E



	SLF 70		SLF 100		SLF 125		SLF 150		SLF 200	
Pos	(mm)	(")	(mm)	(")	(mm)	(")	(mm)	(")	(mm)	(")
ØDo	89	3,504	114	4,488	140	5,512	164	6,457	214	8,425
ØDi	76,5	3,012	101	3,976	126	4,961	151	5,945	201	7,913
L	53	2,165	55	2,165	55	2,165	55	2,165	55	2,165

WITH FLAN. PRIMED MILD STEEL. ACID PROOF AISI 316E



	SLFR 70		SLFR 100		SLFR 125		SLFR 150		SLFR 200	
Pos	(mm)	(")	(mm)	(")	(mm)	(")	(mm)	(")	(mm)	(")
ØDo	160	6,288	195	7,677	213	5,512	236	9,291	290	11,417
ØDi	71,5	2,815	101	3,976	126	4,961	151	5,945	201	7,913
ØB	9	0,354	9	0,354	9	2,165	9	0,354	9	0,354
(Nx)	4x		6x		6x		6x		8x	
ØA	130	5,118	165	6,496	183	7,205	206	8,110	260	10,236
L	55	2,165	55	2,165	55	2,165	55	2,165	55	2,165
I	43	1,692	43	1,692	43	1,692	43	1,692	43	1,692
ØDs	83	3,268	114	4,488	140	5,512	164	6,457	214	8,425
T	4	0,157	4	0,157	4	0,157	4	0,157	4	0,157



## EX SEALING SYSTEM RS EX

The Roxtec RS Ex is a round entry seal including a sleeve. The seal consists of two halves and an adaptable centre with removable layers. Compression is integrated in the seal.

- The sleeves are available in two design versions intended for welding or bolting into place.
- Available in EMC versions.



### RS...W EX INCLUDING SLEEVE FOR WELDING

R 100W Ex AISI 316 woc\*\*/primed  
EXRSW0100102112



RS 75W Ex AISI 316/AISI 316  
EXRSW0750102121

FRAME	FOR CABLE / PIPE		EXTERNAL DIM. (D=60 mm) HxW (mm)   HxW (")		SLEEVE SLR*	WEIGHT	
	(mm)	(")				(Kg)	(Lb)
with primed mild steel sleeve							
RS 25 W Ex AISI 316/primed	0+3.6-12	0+0.142-0.472	25 x 40	0.984 x 1.575	25	0.1	0.306
RS 43 W Ex AISI 316/primed	0+4-23	0+0.157-0.906	43 x 78	1.693 x 3.071	43	0.5	1.203
RS 50 W Ex AISI 316/primed	0+8-30	0+0.315-1.181	50 x 78	1.969 x 3.071	50	0.8	1.840
RS 75 W Ex AISI 316/primed	0+26-48	0+1.024-1.890	75 x 78	2.953 x 3.071	75	1.5	3.359
RS 100W Ex AISI 316 woc**/primed	48-70	1.890-2.756	100 x 83	3.937 x 3.268	100	2.0	4.504
RS 125 W Ex AISI 316 woc**/primed	66-98	2.598-3.858	125 x 83	4.921 x 3.268	125	2.7	6.025
RS 150 W Ex AISI 316 woc**/primed	93-119	3.661-4.685	150 x 85	5.906 x 3.346	150	3.2	7.012
with primed mild steel sleeve							
RS 25 W Ex AISI 316/AISI 316	0+3.6-12	0+0.142-0.472	25 x 40	0.984 x 1.575	25	0.1	0.306
RS 43 W Ex AISI 316/AISI 316	0+4-23	0+0.157-0.906	43 x 78	1.693 x 3.071	43	0.5	1.203
RS 50 W Ex AISI 316/AISI 316	0+8-30	0+0.315-1.181	50 x 78	1.969 x 3.071	50	0.8	1.840
RS 75 W Ex AISI 316/AISI 316	0+26-48	0+1.024-1.890	75 x 78	2.953 x 3.071	75	1.5	3.359
RS 100W Ex AISI 316 woc**/AISI 316	48-70	1.890-2.756	100 x 83	3.937 x 3.268	100	2.0	4.504
RS 125 W Ex AISI 316 woc**/AISI 316	66-98	2.598-3.858	125 x 83	4.921 x 3.268	125	2.7	6.025
RS 150 W Ex AISI 316 woc**/AISI 316	93-119	3.661-4.685	150 x 85	5.906 x 3.346	150	3.2	7.012



# EX SEALING SYSTEM RS EX

## RS...B EX INCLUDING SLEEVE FOR BOLTING

R 100 B Ex AISI 316 woc\*\*/primed  
EXRSB0100102112



RS 75 B Ex AISI 316/AISI 316  
EXRSB0750002121

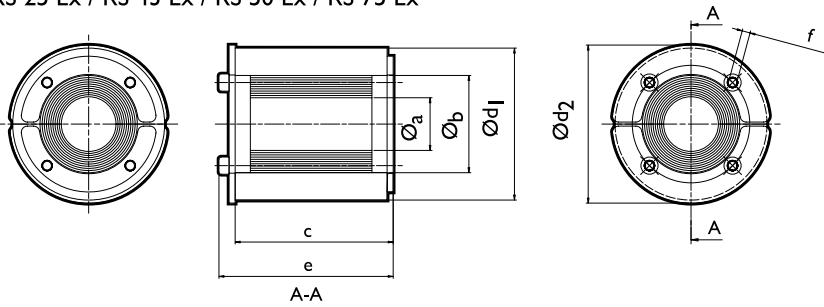
FRAME	FOR CABLE / PIPE		EXTERNAL DIM. (D=60 mm) ØxD (mm)   ØxD (")		SLEEVE SLR*	WEIGHT	
	(mm)	(")				(Kg)	(Lb)
RS 25 B Ex AISI 316/primed	0+3.6-12	0+0.142-0.472	25 x 40	0.984 x 1.575	25	0.1	0.306
RS 43 B Ex AISI 316/primed	0+4-23	0+0.157-0.906	43 x 78	1.693 x 3.071	43	0.5	1.203
RS 50 B Ex AISI 316/primed	0+8-30	0+0.315-1.181	50 x 78	1.969 x 3.071	50	0.8	1.840
RS 75 B Ex AISI 316/primed	0+26-48	0+1.024-1.890	75 x 78	2.953 x 3.071	75	1.5	3.359
RS 100 B Ex AISI 316 woc**/primed	48-70	1.890-2.756	100 x 83	3.937 x 3.268	100	2.0	4.504
RS 125 B Ex AISI 316 woc**/primed	66-98	2.598-3.858	125 x 83	4.921 x 3.268	125	2.7	6.025
RS 150 B Ex AISI 316 woc**/primed	93-119	3.661-4.685	150 x 85	5.906 x 3.346	150	3.2	7.012
With primed mild steel sleeve							
RS 25 B Ex AISI 316/AISI 316	0+3.6-12	0+0.142-0.472	25 x 40	0.984 x 1.575	25	0.1	0.306
RS 43 B Ex AISI 316/AISI 316	0+4-23	0+0.157-0.906	43 x 78	1.693 x 3.071	43	0.5	1.203
RS 50 B Ex AISI 316/AISI 316	0+8-30	0+0.315-1.181	50 x 78	1.969 x 3.071	50	0.8	1.840
RS 75 B Ex AISI 316/AISI 316	0+26-48	0+1.024-1.890	75 x 78	2.953 x 3.071	75	1.5	3.359
RS 100 B Ex AISI 316 woc**/AISI 316	48-70	1.890-2.756	100 x 83	3.937 x 3.268	100	2.0	4.504
RS 125 B Ex AISI 316 woc**/AISI 316	66-98	2.598-3.858	125 x 83	4.921 x 3.268	125	2.7	6.025
RS 150 B Ex AISI 316 woc**/AISI 316	93-119	3.661-4.685	150 x 85	5.906 x 3.346	150	3.2	7.012



# EX SEALING SYSTEM RS EX

## TECHNICAL INFORMATION

RS 25 Ex / RS 43 Ex / RS 50 Ex / RS 75 Ex

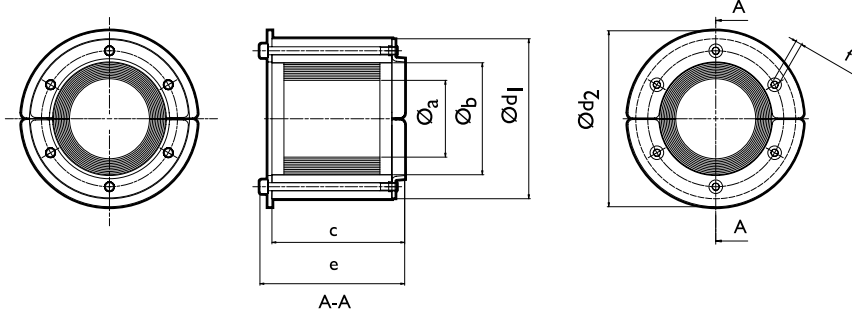


Note: All dimensions are nominal values

\* SW2.5 mm (4x) / SW0.098" (4x)  
\*\* SW4 mm (4x) / SW0.157" (4x)

	RS 25		RS 43		RS 50		RS 75	
Pos	(mm)	(")	(mm)	(")	(mm)	(")	(mm)	(")
c	40	1.575	78	3.071	78	3.071	78	3.071
e	44	1.732	85	3.346	85	3.346	85	3.346
f	*	*	**	**	**	**	**	**
Øa	3.6	0.142	4	0.157	8	0.315	26	1.024
Øb	12	0.472	23	0.906	30	1.181	48	1.890
Ød1	25	0.984	43	1.693	50	1.969	75	2.953
Ød2	30	1.181	53	2.087	60	2.362	78	3.071

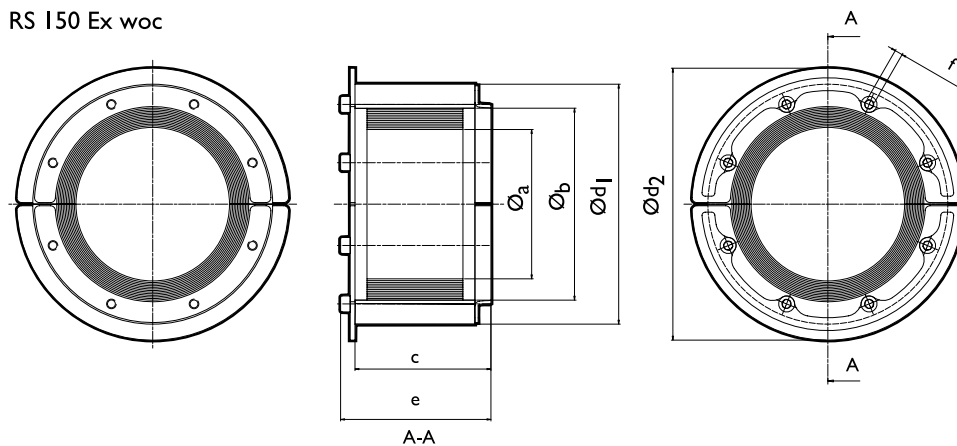
RS 100 Ex / RS 100 Ex woc / RS 125 Ex / RS 125 Ex woc



\*\*\* SW4 mm (6x) / SW0.157" (6x)  
\*\*\*\* SW5 mm (6x) / SW0.197" (6x)

	RS 100 (woc)		RS 125 (woc)	
Pos	(mm)	(")	(mm)	(")
c	83	3.268	83	3.268
e	90	3.543	92	3.622
f	***	***	****	**
Øa	48	1.890	66	2.598
Øb	70	2.756	98	3.858
Ød1	100	3.937	125	4.921
Ød2	110	4.331	145	5.709

RS 150 Ex woc

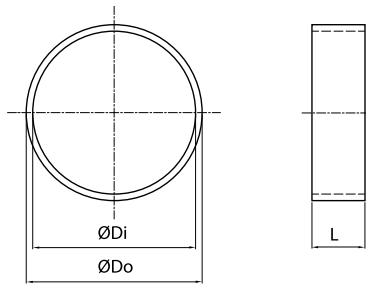


\*\*\*\*\* SW5 mm (8x) / SW0.197" (8x)

	RS 150 (woc)	
Pos	(mm)	(")
c	85	3.346
e	94	3.700
f	***	***
Øa	93	3.661
Øb	119	4.685
Ød1	150	5.906
Ød2	170	6.693

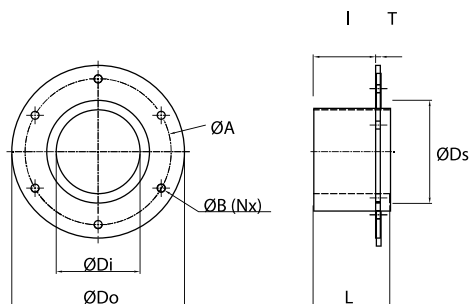
# EX SEALING SYSTEM RS EX

## SLEEVES WITHOUT FLANGE.ACID PROOF AISI 316



	SLF 25		SLF 43		SLF 50		SLF 75		SLF 100		SLF 125		SLF 150	
Pos	(mm)	(")	(mm)	(")	(mm)	(")	(mm)	(")	(mm)	(")	(mm)	(")	(mm)	(")
ØDo	34	1,339	52	2,047	63	2,480	89	3,504	164	6,457	114	4,488	140	5,512
ØDi	25,5	1,004	44	1,732	51	2,008	76,5	3,012	151	5,945	101	3,976	126	4,961
L	35	1,378	65	2,559	65	2,559	65	2,559	65	2,559	65	2,559	65	2,559

## SLEEVES WITH FLANGE.ACID PROOF AISI 316



	SLFRS 25		SLFRS 43		SLFRS 50		SLFRS 75		SLFRS 100		SLFRS 125		SLFRS 150	
Pos	(mm)	(")	(mm)	(")	(mm)	(")	(mm)	(")	(mm)	(")	(mm)	(")	(mm)	(")
ØDo	96	3,780	110	4,331	140	5,512	165	6,496	195	7,677	213	8,386	236	9,291
ØDi	25,5	1,004	44	1,732	51	2,008	76	3,012	101	3,976	126	4,961	151	5,945
ØB	9	0,354	9	0,354	9	0,354	9	0,354	9	0,354	9	0,354	9	0,354
(Nx)	4x		4x		4x		4x		6x		6x		6x	
ØA	72	2,835	80	3,150	110	4,331	135	5,351	165	6,496	183	7,205	206	8,110
L	35	1,378	35	1,378	65	2,559	65	2,559	65	2,559	65	2,559	65	2,559
I	24	0,944	24	0,944	53	2,086	53	2,086	53	2,086	53	2,086	53	2,086
ØDs	34	1,339	52	2,047	63	2,480	89	3,504	114	4,488	140	5,512	164	6,457
T	3	0,118	3	0,118	4	0,157	4	0,157	4	0,157	4	0,157	4	0,157



## EX SEALING SYSTEM C RST EX

The Roxtec C RST Ex sealing solution is available in four sizes. Together they seal single cables from Ø3.6 mm to Ø30 mm.

The C RST Ex kits come as a complete sealing solution, containing a threaded sleeve with gasket, a counter nut and a round C RST seal for a single cable. A Roxtec C RST Ex kit makes installation of pre-terminated cables easy, for example in cabinet walls and other types of similar structures.



### C RST EX SEAL, NICKEL-PLATED BRASS



C RST 25 Ex  
EXCRST010025046



C RST 31 Ex  
EXCRST010031046



C RST 43 Ex  
EXCRST010043046

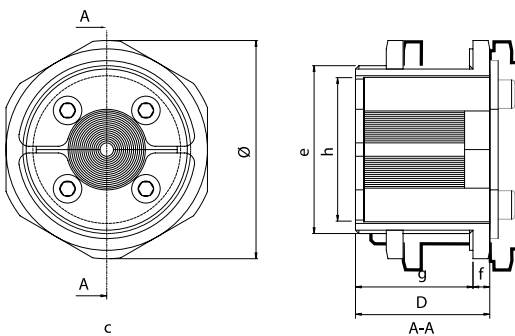


C RST 50 Ex  
EXCRST010050046

KIT	DIM.THE HOLLOW +1/-0 mm (+0.0394*/-0*) Ø (mm)   Ø (")		FOR CABLE / PIPE / TUBERIA Ø (mm)   Ø (")		EXTERNAL DIM. SLEEVE ØxD (mm)   ØxD (")	
	mm	inch	mm	inch	mm	inch
C RST 25 Ex	32	1.260	0+3.6-12.0	0+0.142-0.472	39 x 20	1.535 x 0.787
C RST 31 Ex	40	1.575	0+4.0-17.0	0+0.175-0.669	50 x 20	1.969 x 0.787
C RST 43 Ex	50	1.969	0+4.0-23.0	0+0.157-0.906	65 x 40	2.559 x 1.575
C RST 50 Ex	63	2.480	0+8.0-30.0	0+0.315-1.181	78 x 40	3.071 x 1.575

### TECHNICAL INFORMATION

Note: All dimensions are nominal values



	C RST 25 Ex		C RST 31 Ex		C RST 43 Ex		C RST 50 Ex Pos	
Pos	(mm)	(")	(mm)	(")	(mm)	(")	(mm)	(")
c	36	1.4717	46	1.811	60	2.362	70	2.756
e	M32x1.5	M32x1.5	M40x1.5	M40x1.5	M50x1.5	M50x1.5	M63x1.5	M63x1.5
f	4	0.157	5	0.197	5	0.197	6	0.236
g	16	0.630	15	0.591	35	1.378	34	1.339
D	20	0.787	20	0.787	40	1.575	40	1.575



## EX SEALING SYSTEM ROXTEC WEDGE EX

The Roxtec Wedge Ex is the compression unit for S, SF...W, and G Ex frames. The Roxtec Wedge Ex is a highly efficient compression unit which saves valuable installation time both when it comes to installation and re-installation of the Roxtec sealing system. This is made possible by the fact that the complete compression unit consists of only one piece, which, by turning the screws in the front, both compresses and decompresses.



### WEDGE KIT/PARTS EX, GALVANISED

Wedge kit 120 Ex galv  
EXAWK0001201018

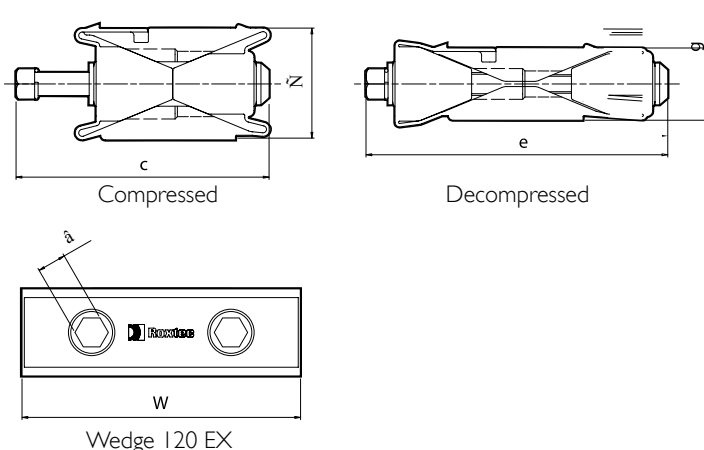


Wedge 120 Ex galv  
EXARW0001201018

KIT	DIM. EXTERNA		WEIGHT	
	W (mm)	W (")	(Kg)	(lb)
Wedge kit 120 Ex galv*	(wedge) 120	(wedge) 4.724	1.5	3.307
Wedge 120 Ex galv	120 4.	724	0.8	1.764

\* El Wedge kit incluye una unidad de compresión Roxtec wedge 120 Ex, cinco placas de separación (stayplates), un wedge clip, un lubricante e instrucciones de instalación.

### TECHNICAL INFORMATION



Note: All dimensions are nominal values

Pos	C RST 25 Ex	
	(mm)	(")
c	109	4.291
e	130	5.118
f	48	1.890
g	29	1.142
k	SW 13	SW 0.512

# EX SEALING SYSTEM ROXTEC WEDGE EX

## WEDGE KIT/PARTS EX, STAINLESS STEEL

Wedge kit 120 Ex AISI 316  
EXAWK0001201021

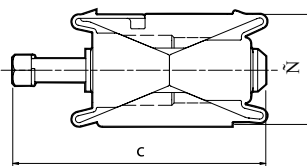


Wedge Ex AISI 316  
EXARW0001201021

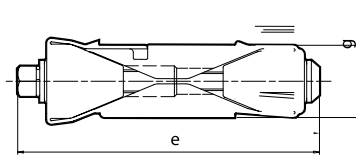
KIT	DIM. EXTERNA		WEIGHT	
	W (mm)	W (")	(Kg)	(lb)
Wedge kit 120 Ex AISI 316*	(wedge) 120	(wedge) 4.724	1.5	3.307
Wedge 120 Ex AISI 316	120	4.724	0.8	1.764

\* The Wedge kit includes one Roxtec Wedge 120Ex, five Stayplates, gauge tool, one wedge clip, one Lubricant and installation instructions.

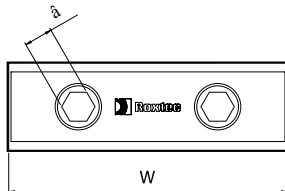
## TECHNICAL INFORMATION



Compressed



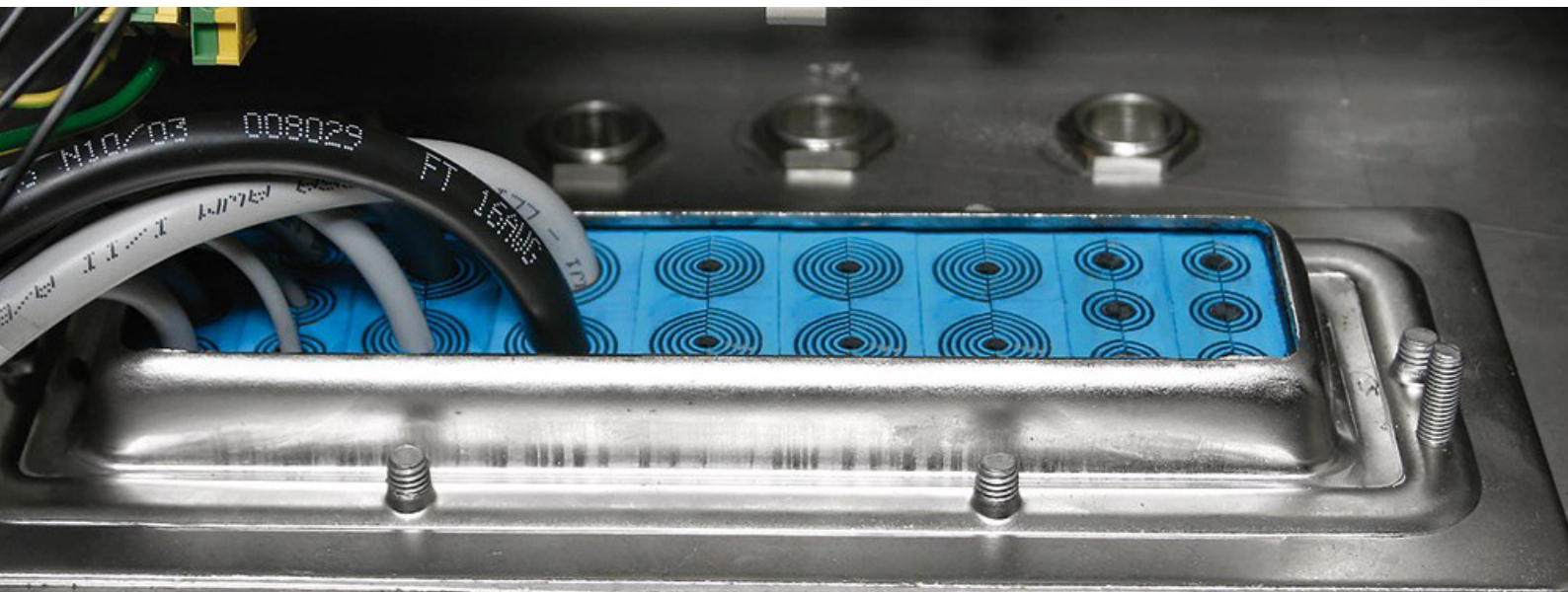
Decompressed



Wedge 120 EX

Note: All dimensions are nominal values

Pos	C RST 25 Ex	
	(mm)	(")
c	109	4.291
e	130	5.118
f	48	1.890
g	29	1.142
k	SW 13	SW 0.512





## EX SEALING SYSTEM STAYPLATE EX

Roxtec Stayplates Ex are used for pull-out resistance against forces in cables. To be inserted between rows of modules in frames with a rectangular packing space and no built-in compression.

- For use with Group RM frames and components.



### STAYPLATE EX

Stayplate 120 Ex galv  
EXASP001200018

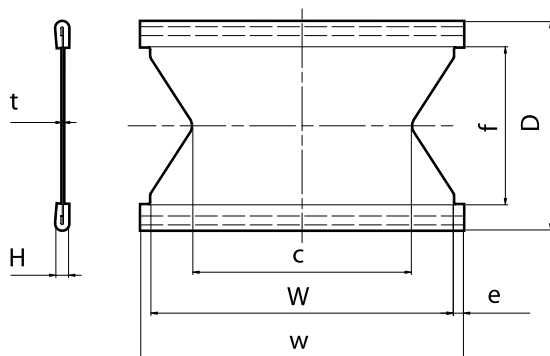


Stayplate 120 Ex AISI 316  
EXASP001200021

KIT	FITS PACKING SPACE		WEIGHT	
	W (mm)	W (")	(Kg)	(lb)
Stayplate 120 Ex galv	120	4.724	0.1	0.243
Stayplate 120 Ex AISI 316	120	4.724	0.1	0.243

## TECHNICAL INFORMATION

Note: All dimensions are nominal values



POS	(mm)	(")
t	0.5	0.020
c	86	3.386
e	4	0.157
f	62	2.499
D	82	3.228
H	5	0.197
W	119	4.685
w	127	5.000

- Galv: Galvanized

- AISI 316 Acid proof stainless steel



# FLEXIBLE EX SEALING SYSTEM SOLUTIONS

## LUBRICANT

Natural tallow is used to lubricate the sealing modules, Roxtec Wedge and the inside of the frame. This provides even compression and a secure seal.



Lubricant 10 ml  
ALT0000001000



Lubricant 25 ml  
ALT0000003000



## ROXTEC WEDGE CLIP

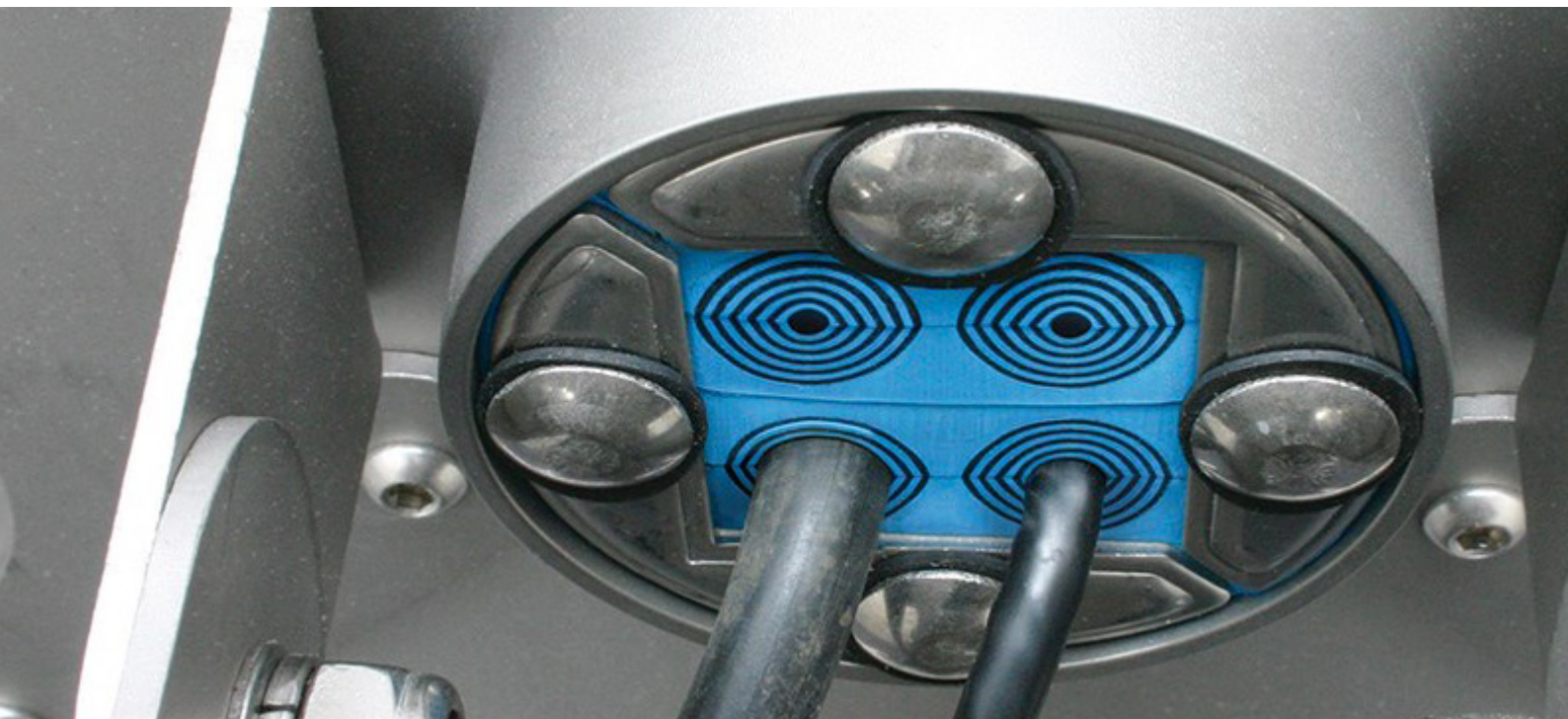
The Roxtec wedge clip is delivered with the Roxtec wedge. Attach the wedge clip to the wedge bolts to check that the wedge has been properly tightened.

## SLIDE CALIPER

A handy tool for easy selection of proper module size and its adaptation. Shows cable OD, corresponding module and approximately how many layers to peel in each module half.



Slide Caliper  
IQR0001000000





# FLEXIBLE EX SEALING SYSTEM SOLUTIONS

## ASSEMBLY / DISASSEMBLY TOOLS

The Pre Compression tools, small and large, help compressing installed modules and stayplates to make more room for the Roxtec Wedge. During installation they also help keeping the items in place.



Pre Compression Tool, small  
5ICT000001269



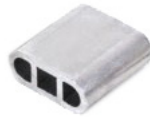
Pre Compression Tool, large  
ICT0001000000



Pre-compression eccentric tool, large  
ICT0001000301

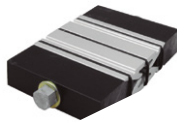


Pre-compression eccentric tool, small  
ICT0001000302



Pre-compression eccentric tool, compact  
ICT0001000316

The different types of pre-compression tools facilitate installations by compressing rows of modules and stayplates to make more room for the Roxtec Wedge during installation.



Pre-compression wedge 60/40  
5ICT000003691



Pre-compression wedge 120  
ICT0001000500



Handgrip pre-comp  
ICT0001000401

Stayplate clamps for horizontal installations. To be used with stayplates, minimum width 120 mm, 4.724" ..



Stayplate clip  
ICT0001000200



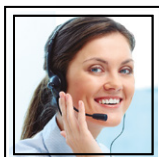
Stayplate clip  
ICT0001000200

Stayplate clip for use with RM stayplates, minimum width 120 mm, 4.724" ..



INTELLIGENT CABLE GLANDS

Glakor a division of DelValle Global Solutions S.L.U.



Paso del Prao, 6. 01320 Oyón (Álava). Spain  
+34 945 601 381

comercial@glakor.com | [www.cableglandsfast.com](http://www.cableglandsfast.com) | [www.glakor.com](http://www.glakor.com)

Contact us, we will be available at any time